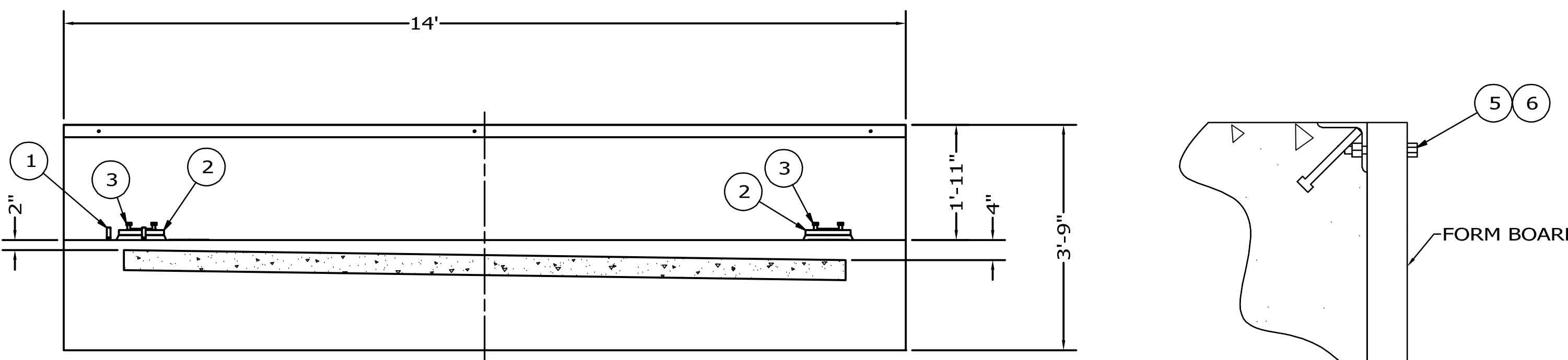
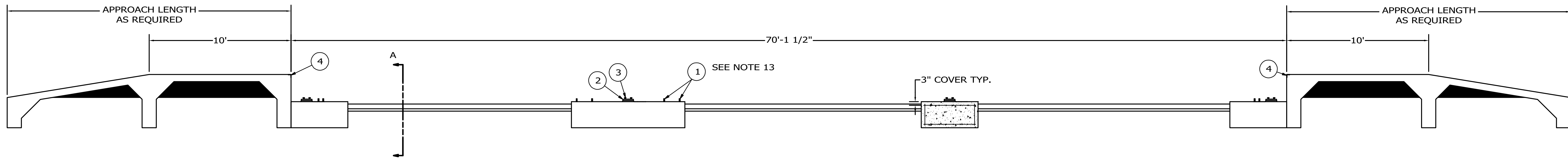
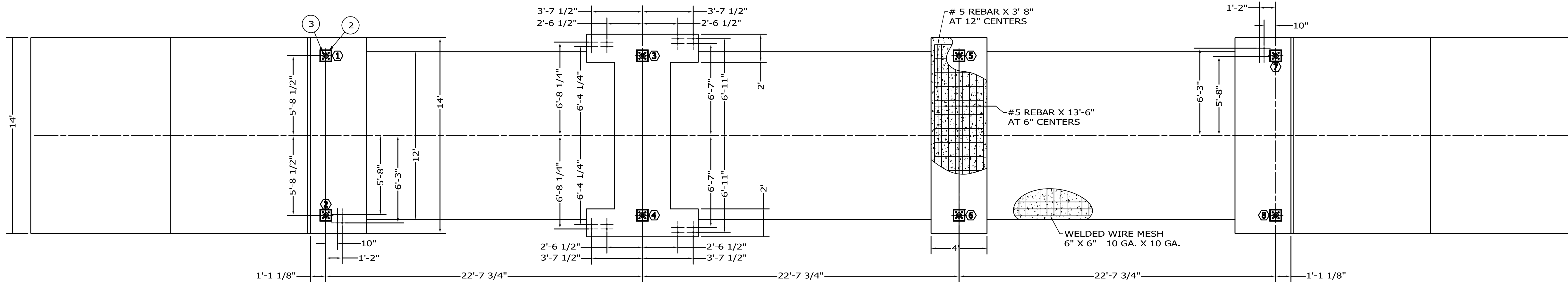


REVISION HISTORY			
LTR	DESCRIPTION	DATE	BY
A	RELEASE FOR PRODUCTION	05/11/09	24706 ADB

PIER LOADING AT 70 TON CLC	
PIER	LOADING
1	100 KIPS
2	100 KIPS
3	120 KIPS
4	120 KIPS
5	120 KIPS
6	120 KIPS
7	100 KIPS
8	100 KIPS



- NOTES:
- ITEMS 1 THRU 6 ARE FURNISHED BY CARDINAL SCALE MFG. CO. AS NOTED.
 - THE SCALE FOUNDATION AS SHOWN IS SUFFICIENT FOR FIRM SOIL AND GOOD CONCRETE. THE MINIMUM SOIL BEARING SHALL BE 3,000 POUNDS PER SQUARE FOOT AND THE MINIMUM CONCRETE STRENGTH SHALL BE 3,000 POUNDS PER SQUARE INCH, 28 DAY. FOR UNUSUAL SOIL CONDITIONS OR DEEP FROST PENETRATION, ALTER THE FOUNDATION AS REQUIRED. THE FOOTING SHALL BE BELOW THE FROST LINE.
 - CARDINAL SCALE MFG. CO. SHALL NOT BE RESPONSIBLE FOR THE STABILITY OF THE FOUNDATION.
 - THE FOUNDATION CONTRACTOR SHALL CONTACT THE STATE WEIGHT AND MEASURES DIVISION FOR STATE FOUNDATION REQUIREMENTS.
 - WORK FROM THE CENTER LINES WHEN ERECTING FORMS AND SETTING BOLTS.
 - ON THE APPROACH END OR ENDS OF A VEHICLE SCALE INSTALLED IN ANY ONE LOCATION FOR A PERIOD OF SIX MONTHS OR MORE, THERE SHALL BE A STRAIGHT APPROACH AS FOLLOWS:
 - AT LEAST THE WIDTH OF THE PLATFORM AND
 - AT LEAST ONE-HALF THE LENGTH OF THE PLATFORM BUT NOT REQUIRED TO BE MORE THAN 40 FEET, AND
 - NOT LESS THAN 10 FEET OF ANY APPROACH ADJACENT TO THE PLATFORM SHALL BE CONSTRUCTED OF CONCRETE OR SIMILAR DURABLE MATERIAL TO INSURE THAT THIS PORTION REMAINS SMOOTH AND LEVEL AND IN THE SAME PLANE AS THE PLATFORM. HOWEVER, GRATING OF SUFFICIENT STRENGTH TO WITHSTAND ALL LOADS MAY BE INSTALLED IN THIS PORTION; AND FURTHER WHERE DEEMED NECESSARY FOR DRAINAGE PURPOSES, THE REMAINING PORTION OF THE APPROACH MAY SLOPE SLIGHTLY.
 - APPROX. 225.7 CU. YDS. OF EXCAVATION AND APPROX. 152 CU. YDS. OF CONCRETE ARE REQUIRED FOR THE PIT AS SHOWN.
 - TRANSMISSION CABEL FROM LOAD CELL TO INDICATOR SHALL BE IN 1 1/2" MINIMUM SIZE CONDUIT AT LEAST 24" FROM THE CLOSEST ELECTRICAL LINE. THEY MAY CROSS AT 90° ONLY.
 - CAUTION: DO NOT WELD ON STRUCTURE WHILE THE ELECTRONIC LOAD CELLS ARE IN THE SYSTEM.
 - REFER TO DRAWING 3502-C435-GS FOR PROPER ELECTRICAL GROUNDING SPECIFICATIONS.
 - REINFORCING ROD AND WELDED WIRE MESH ARE NOT FURNISHED BY CARDINAL SCALE MFG. CO. THE REBAR SHALL CONFORM TO ASTM A615, GRADE 60. THE WELDED WIRE MESH SHALL CONFORM TO ASTM A-185
 - TOP OF PIERS ARE TO BE SMOOTH AND LEVEL WITHIN ±1/8". (ALL PIERS ARE TO BE WITHIN 1/4")
 - ITEMS 1 IS SUPPLIED BY CARDINAL SCALE MFG. CO. ONLY WHEN REQUESTED.

QTY.	QTY.	QTY.	ITEM	PART/DWG. NUMBER	DESCRIPTION	MATERIAL OR SOURCE	WT. EACH
	6	6	6013-0065		HEX NUT		
	6	5	6007-0050		HEX HEAD BOLT		
	2	4	0146-B089-0A		ANGLE ASSEMBLY		62.2
	32	3	6007-0230		HEX HEAD BOLT		.5
	8	2	0146-B019-0A		GROUT PLATE ASSEMBLY		24.1
	24	1	6007-0280		ANCHOR BOLT	3/4" -10UNC-2A X 10"	1.3
	240	WT.					

PARTS/MATERIAL LIST			
SCALE	NTS	DRAWING	NEXT ASSEMBLY
DR. ADB	DATE	05/11/09	0140-D480-0A 0140-D489-0A
CH.	DATE		
MODEL	SHEET	1	DWG. NO.
15070-CY12			0140-D479-0A
			REV. A

SECTION A-A